



Valentines Heart Sewing Pattern

Tools And Supplies:
felt fabric
toy stuffing
4-5 mm doll eyes
embroidery floss
needle and thread

delilahiris.com



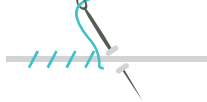
Felt Valentines Box of Chocolate Dipped Strawberries!

Begin by cutting all of your felt pieces as directed by the last page of the pattern. The easiest way to cut felt is with a small sharp pair of scissors. For the greatest precision you could: 1. choose to trace the pattern pieces onto the felt, or 2. iron some wax paper to the felt then trace onto that and cut, or 3. tape the pattern pieces to the felt with some wide clear tape, cutting through both tape and felt simultaneously.

Begin by installing eyes on the main body pieces of the strawberry. I like to use a 3-4 mm plastic doll eye but you could use beads or tiny buttons, embroider the eyes or even paint them. Stitch a small mouth just below the eyes. Match together the edges of the gussets (cut v's) at the top and bottom of the strawberry and stitch together at the back of the felt. Repeat sewing the gussets to the back piece of the strawberry.

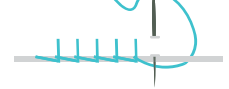


Whip Stitch



I like to use the blanket stitch or whip stitch for sewing my felties!

Blanket Stitch



Match together the front and back pieces of the strawberry. Stitch the edges together leaving just a small opening to insert stuffing. Stuff the strawberry completely full then sew the opening shut. Wrap the chocolate pattern piece around the bottom of the strawberry and pin or hold into place. Begin sewing into place at the sides.



Sew the chocolate into place at both sides of the strawberry, then top stitch across the top of the chocolate using a backstitch. Add seeds to the strawberry by stitch very simple straight stitches scattered randomly around the outside of the strawberry.

Let's add a stem to the strawberry! Start by folding the petals of the strawberry leaf inward and in half at the end of the stem then stitching in place across the top of the leaves/ base of the stem.



Roll the rectangular stem piece up toward the leaves to form a stem and stitch into place along the stem. Place the leaves onto the top of the strawberry and stitch into place creating a stitch at the top of each leaf.

Next we'll move on to create the heart shaped box! This pattern is created to make a basic heart shaped box, but I encourage you to get creative and decorate the box how you see fit. I'd love to see what you create!!

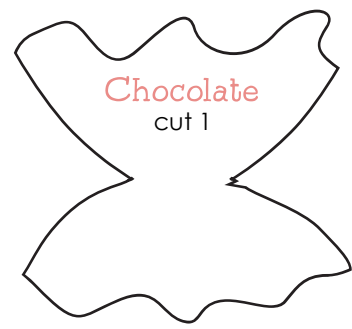
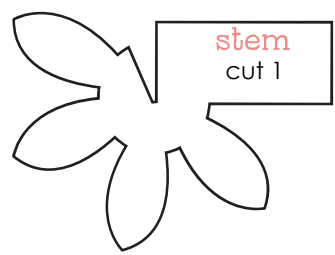
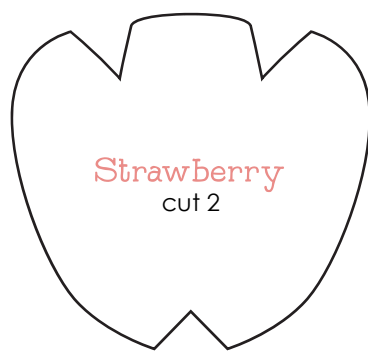
To create the heart shaped box you will need to cut two pieces each for the top and bottom heart shapes. Cut 4 pieces each for the sides of each the top and bottom. Stitch together double layers of each piece, using a whip stitch or blanket stitch for the outer edges of the hearts. Use a running stitch to top stitch along the edges of the side pieces.



Pin the sides into place onto the hearts and sew into place with a whip stitch or running stitch until you have a completed top and bottom of the heart shaped box. fill the box with mini muffin cups and pop in your hand sewn strawberries!

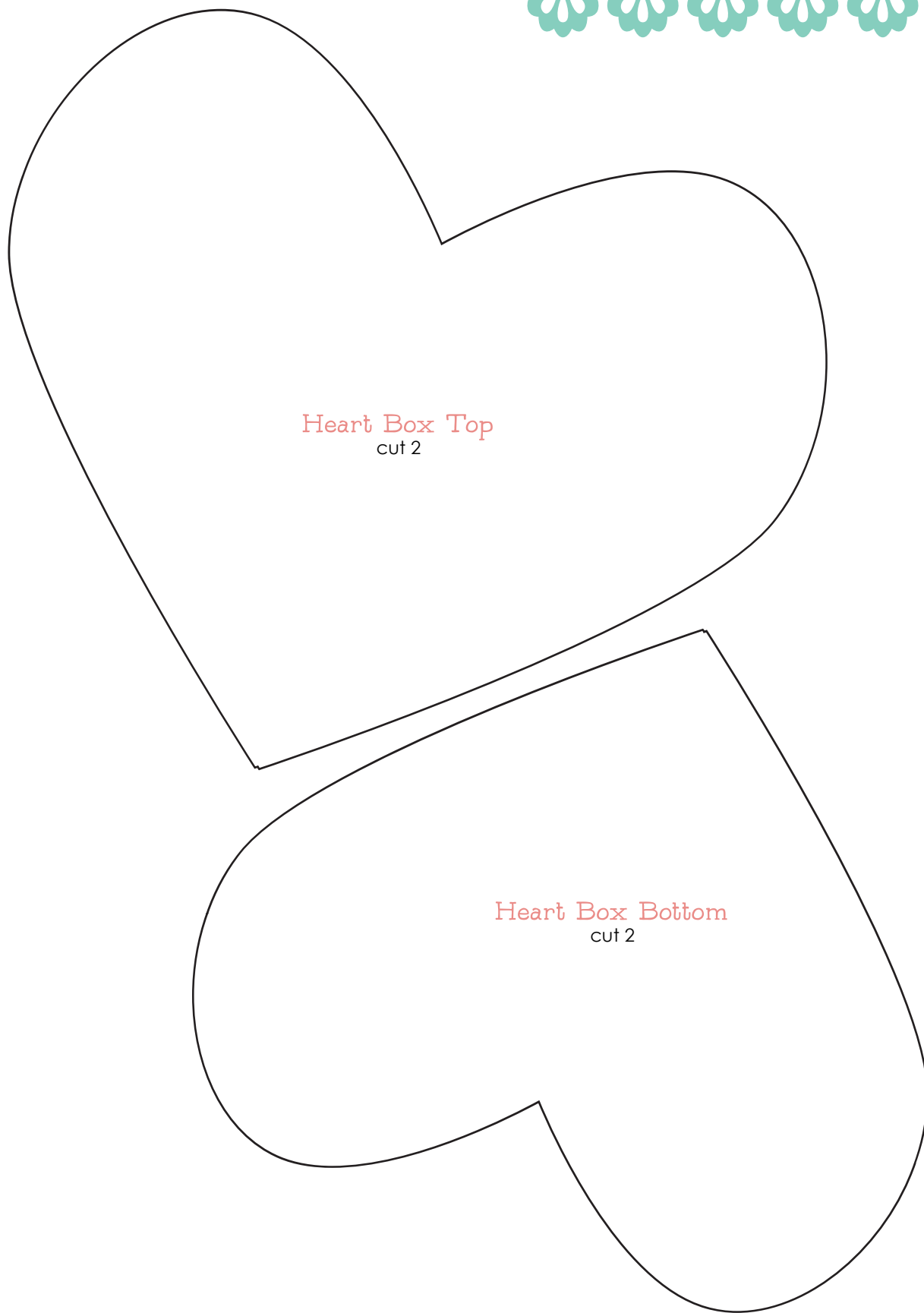


DIY Valentine's Heart



ALL RIGHTS RESERVED. Copyright Delliahiris2026. No portion of this pattern may be photocopied or reproduced by any means without the express written consent of Delliahiris2026. Your purchase of this pattern or tutorial is a license for personal use. Copyright to all pattern pieces, photos, and instructional material remains with Delliahiris2026. Delliahiris2026 cannot be held responsible for human error, printing errors or individual workmanship. All patterns and tutorials are protected herein by copyright and may not be produced for any commercial resale or mass production. Items made with Delliahiris2026 patterns and tutorials may be produced from a home based setting and sold on a small scale basis (less than 250 per year total of all designs).

Should you choose to sell the physical goods credit is required to Delliahiris2026 in your listing as well as a link to the pattern at delliahiris.com.



ALL RIGHTS RESERVED. Copyright Dellahiris2026. No portion of this pattern may be photocopied or reproduced by any means without the express written consent of Dellah Iris Designs.
Your purchase of this pattern or tutorial is a license for personal use. Copyright to all pattern pieces, photos, and instructional material remains with Dellah Iris Designs. Dellah Iris Designs cannot be held responsible for human error, printing errors or individual workmanship. All patterns and tutorials are protected herein by copyright and may not be produced for any commercial resale or mass production. Items made with Dellah Iris Designs patterns and tutorials may be produced from a home based setting and sold on a small scale basis (less than 250 per year total of all designs).

Should you choose to sell the physical goods credit is required to Dellah Iris Designs in your listing as well as a link to the pattern at dellahiris.com.